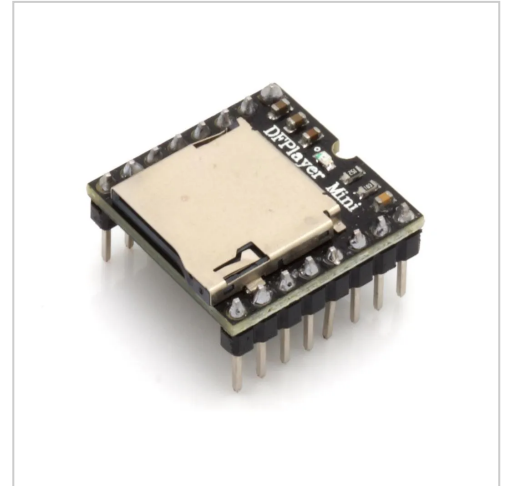


MP3 player module with built-in amplifier

The DFPlayer Mini decodes MP3 and WAV files from a micro SD card. It can either be connected to an Arduino device via a serial interface or, thanks to the integrated amplifier, directly to a loudspeaker (up to 3W) and used as an audio source

Product number DFP-MINI

Weight 0.001kg



Product description

The DFPlayer Mini decodes MP3 and WAV files from a micro SD card. It can either be connected via serial interface to an Arduino device or, thanks to the integrated amplifier, directly to a loudspeaker (up to 3W) and controlled via pushbuttons.

Features

- Unterstützte Abtastraten(kHz): 8/11.025/12/16/22.05/24/32/44.1/48
- 24-bit DAC output, dynamic range: 90 dB, SNR: 85 dB
- Supports FAT16 and FAT32
- Slot for TF/micro SD card, up to 32GB, supports U-Disk up to 32GB, 64MB NORFLASH
- Operating voltage: 3.2-5V
- Current consumption (standby): 20 mA
- Audio outputs: DAC, amplifier for speakers up to 3W
- Audio files are organised in folders (up to 100 folders with up to 255 files each possible)
- 30 volume levels, equaliser
- Interface: Serial RX/TX, baud rate: 9600
- Chipset: GD3200D
- Dimensions: approx. 2 x 2 cm

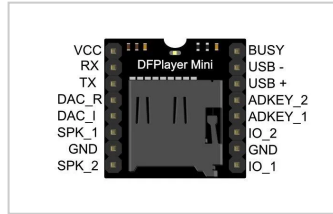
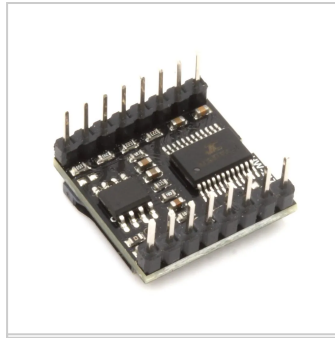
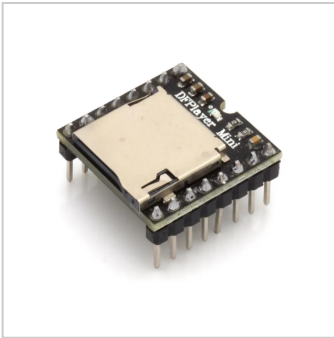
Documentation / Downloads

- https://wiki.dfrobot.com/DFPlayer_Mini_SKU_DFR0299

Product properties

Zolltarifnummer	84733020
Gross Weight (kg)	0.001
Country of Origin	China
Brand	BerryBase
Product ID	DFP-MINI
EAN	4251266700302
Manufacturer ID	DFP-MINI

More images



Pin	Description	Note
VCC	Input Voltage	DC3.2-5.0V>Type: DC4.2V
RX	UART serial input	
TX	UART serial output	
DAC_R	Audio output right channel	Drive earphone and amplifier
DAC_L	Audio output left channel	Drive earphone and amplifier
SPK2	Speaker-	Drive speaker less than 3W
GND	Ground	Power GND
SPK1	Speaker+	Drive speaker less than 3W
IO1	Trigger port 1	Short press to play previous (long press to decrease volume)
GND	Ground	Power GND
IO2	Trigger port 2	Short press to play next (long press to increase volume)
ADKEY1	AD Port 1	Trigger play first segment
ADKEY2	AD Port 2	Trigger play fifth segment
USB+	USB+ DP	USB Port
USB-	USB- DM	USB Port
BUSY	Playing Status	Low means playing High means no

Format	SS	VER	Len	CMD	Feedback	para1	para2	checksum	SO
SS	Start bit (0x7E)	Each command feedback begins with 5... that is 0x7E.							
VER	Version	Version Information							
Len	the number of bytes after "Len"	Checksums are not counted.							
CMD	Commands	Indicate the specific operations, such as play / pause, etc.							
Feedback	Command feedback	If need for feedback, 1: feedback, 0: no feedback.							
para1	Parameter 1	Query high data byte							
para2	Parameter 2	Query low data byte							
checksum	Checksum	Accumulation and verification (not include start bit 0).							
SO	End bit	End bit: 0xFF							

For example, if we specify play NEXT (SS) you need to send: 7E FF 00 00 00 00 FF 00 FF
Data length is 6, which are 6 bytes FF 00 00 00 00 FF. Not counting the start, end, and verification.

Commands	Function Description	Parameters(16 bit)
0x3C	STAY	
0x3D	STAY	
0x3E	STAY	
0x3F	Send initialization parameters	0 ~ 0xFF(Each bit represent one device of the low-four bits)
0x40	Returns an error, request retransmission	
0x41	Reply	
0x42	Query the current status	
0x43	Query the current volume	
0x44	Query the current EQ	
0x45	Query the current playback mode	
0x46	Query the current software version	
0x47	Query the total number of TF card	
0x48	Query the total number of UDisk files	
0x49	Query the total number of flash files	
0x4A	Keep on	
0x4B	Queries the current track of TF card	
0x4C	Queries the current track of U-Disk	
0x4D	Queries the current track of Flash	